



9.0 SeismicCo®

**KIT
HELM10**

HELMER REFRIGERATOR/FREEZER KIT

HELM10-S SINGLE DOOR UNITS

HELM10-D DOUBLE DOOR UNITS



9.0 SeismicCo®

SEISMIC BRACKETS AND ANCHORING KITS

2340 W. Parkside Lane Suite H-111
Phoenix, Arizona 85027
623-806-0156
info@seismicco.com
www.seismicco.com
Lic # 21000346-N

HELMER SCIENTIFIC HORIZON SERIES & I SERIES REFRIGERATOR/FREEZER FLOOR ANCHORAGE KIT

KITS #HELM10-S SINGLE DOOR UNITS

#HELM10-D DOUBLE DOOR UNITS



ICC-ESR-4233



Scan for a Copy of the Report



9.0 SeismicCo®

SEISMIC BRACKETS AND ANCHORING KITS

2340 W. Parkside Lane Suite H-111
Phoenix, Arizona 85027
623-806-0156
info@seismicco.com
www.seismicco.com
Lic:# 21000346-N

ANCHORAGE KIT

KIT #HELM10

DESCRIPTION SUMMARY:

- Refrigerator/Freezer Anchorage
- Kit anchors from bottom of unit directly to floor
- Removable front bolts for convenient servicing

SUPPORTED EQUIPMENT:

- All Helmer wheeled refrigerator/freezer units - Single Door & Double Door

PARTS INCLUDED: Single Door Kit HELM10-S

- 2 - 9.0 Seismic Co. back bracket assemblies
- 2 - 9.0 Seismic Co. front bracket assemblies
- 8 - Hilti 1/2" x 3-3/4" KBTZ (ICC ESR-1917)
- 16 - #14 x 1-1/2" Tek Screws
- 4 - 1/4" x 1'-1/4" A307 Bolts w/washer, lock washer and nuts

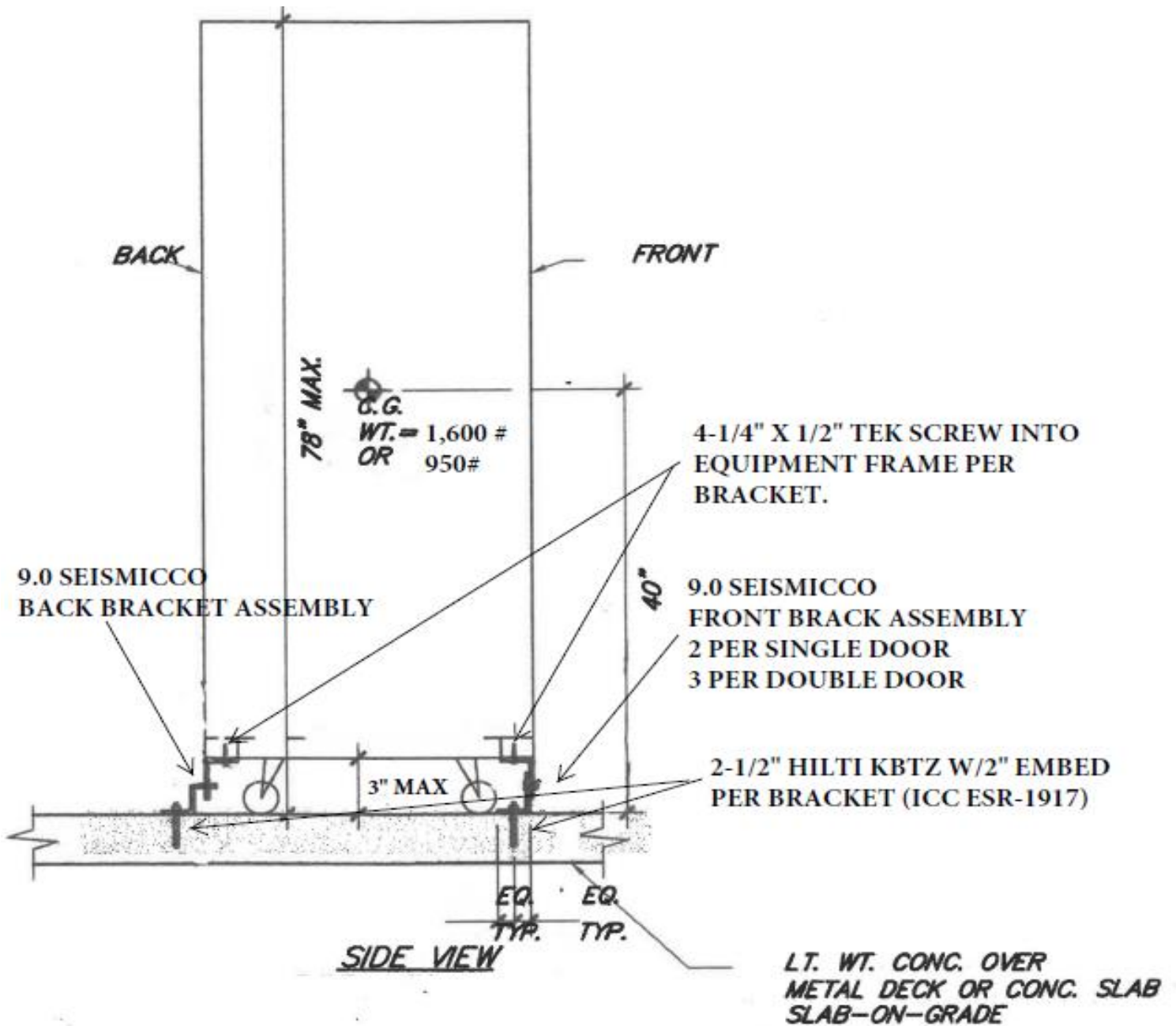
PARTS INCLUDED: Double Door Kit HELM10-D

- 3 - 9.0 Seismic Co. back bracket assemblies
- 3 - 9.0 Seismic Co. front bracket assemblies
- 12 - Hilti 1/2" x 3-3/4" KBTZ (ICC ESR-1917)
- 24 - #14 x 1-1/2" Tek Screws
- 6 - 1/4" x 1'-1/4" A307 Bolts w/washer, lock washer and nuts

ANCHORAGE DETAIL

9.0 SEISMIC CO KIT #HELM10

SIDE VIEW



9.0 SeismicCo®

SEISMIC BRACKETS AND ANCHORING KITS

2340 W. Parkside Lane Ste. H-111

Phoenix, Arizona 85027

Office: (623)8606-0156

Email: info@seismicco.com

Website: www.seismicco.com

Date: 3-20-2020

Sheet

3

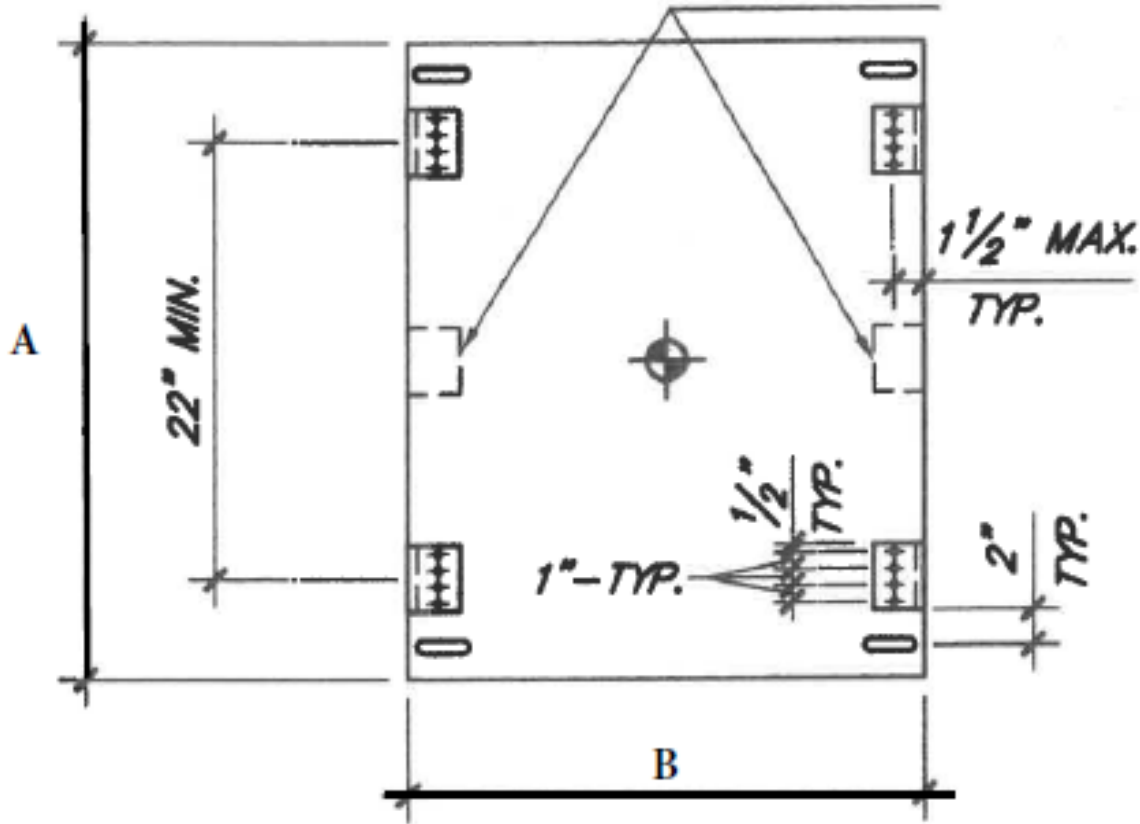
of 4 Sheets

ANCHORAGE DETAIL

9.0 SEISMIC CO KIT #HELM10

PLAN VIEW

Additional Location for Added Double Door Units



Side A Max Width

Single Door - 26"

Double Door - 57"

Side B Max Depth

Single Door - 32"

Double Door - 32"



9.0 SeismicCo

SEISMIC BRACKETS AND ANCHORING KITS

2340 W. Parkside Lane Ste. H-111

Phoenix, Arizona 85027

Office: (623)8606-0156

Email: info@seismicco.com

Website: www.seismicco.com

Date: 3-20-2020

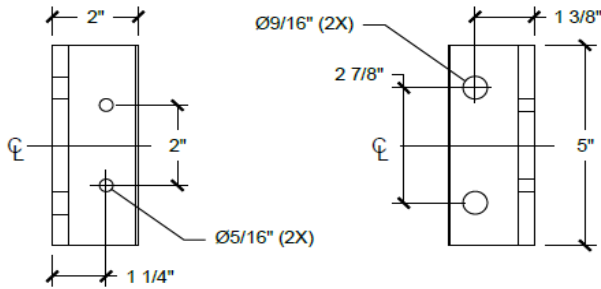
Sheet

2

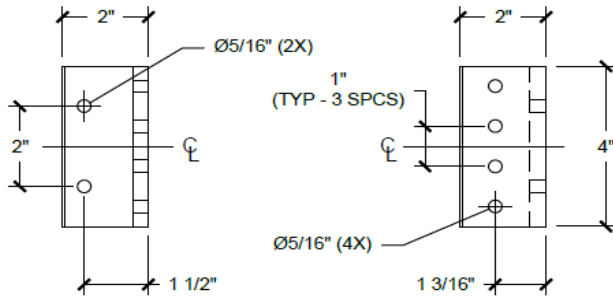
of 4 Sheets

BRACKET DETAIL

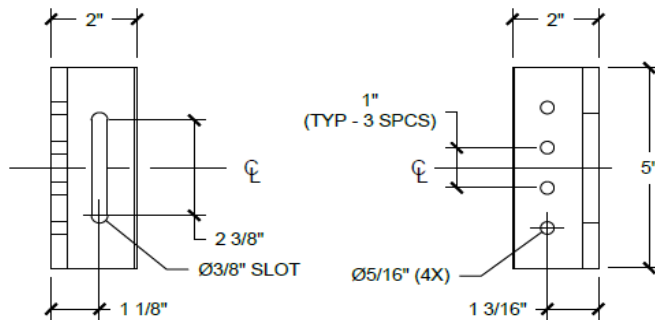
9.0 SEISMIC CO KIT #HELM10



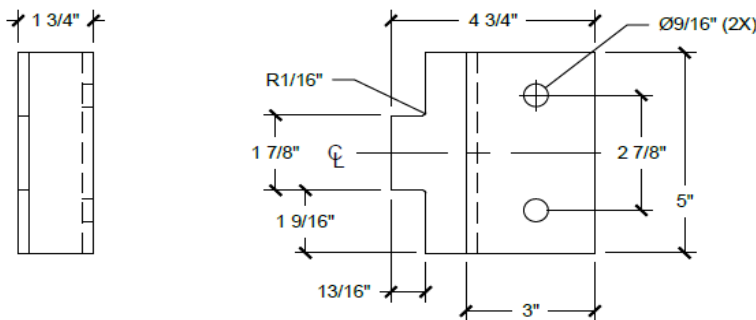
PART A - L 2" x 2" x 3/8"
SCALE: 3" = 1'-0"



PART B - L 2" x 2" x 3/8"
SCALE: 3" = 1'-0"



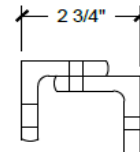
PART C - L 2" x 2" x 3/8"
SCALE: 3" = 1'-0"



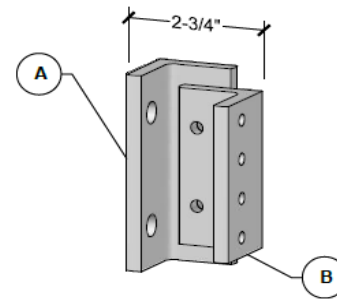
PART D - PL 1/4" x 6-1/2" x 5"
SCALE: 3" = 1'-0"

NOTES:

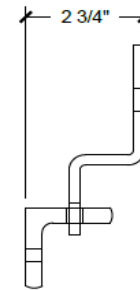
1. ALL PLATE MATERIAL ASTM A36, ALL SHAPED MATERIAL A500 GR. C.
2. ALL WRITTEN DIMENSIONS SUPERCEDES SCALED DIMENSIONS.
3. ALLOWED TOLERANCE FOR MANUFACTURING IS $\pm 1/16"$ UNLESS OTHERWISE NOTED.
4. IF DRAWING IS NOT PRINTED 1:1 ON AN A-SIZE SHEET ($8\frac{1}{2}$ X 11), THE DRAWING MUST NOT BE USED TO SCALE.
5. FINISH: POWDER RAL 9003 (SIGNAL WHITE).



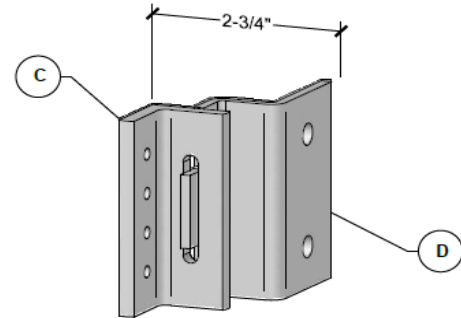
TOP VIEW ASM
SCALE: 3" = 1'-0"



ISOMETRIC ASM
SCALE: 3" = 1'-0"



TOP VIEW ASM
SCALE: 3" = 1'-0"



ISOMETRIC ASM
SCALE: 3" = 1'-0"



9.0 SeismicCo

SEISMIC BRACKETS AND ANCHORING RITS

2340 W. Parkside Lane Ste. H-111
Phoenix, Arizona 85027
Office: (623)806-0156
Email: info@seismicco.com
Website: www.seismicco.com

Date: 3-20-2020

Sheet

4

of 4 Sheets